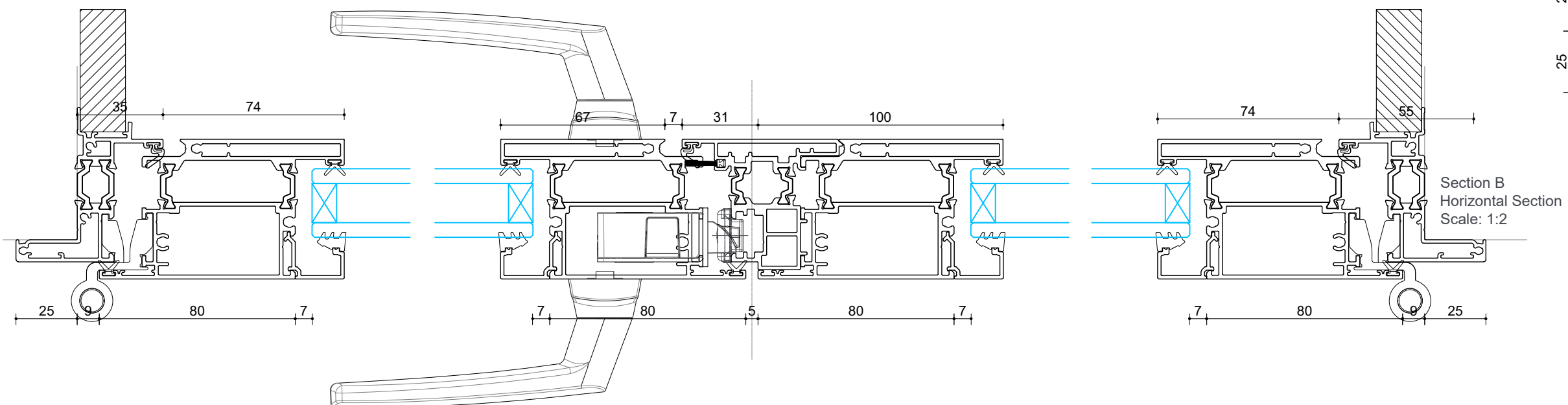
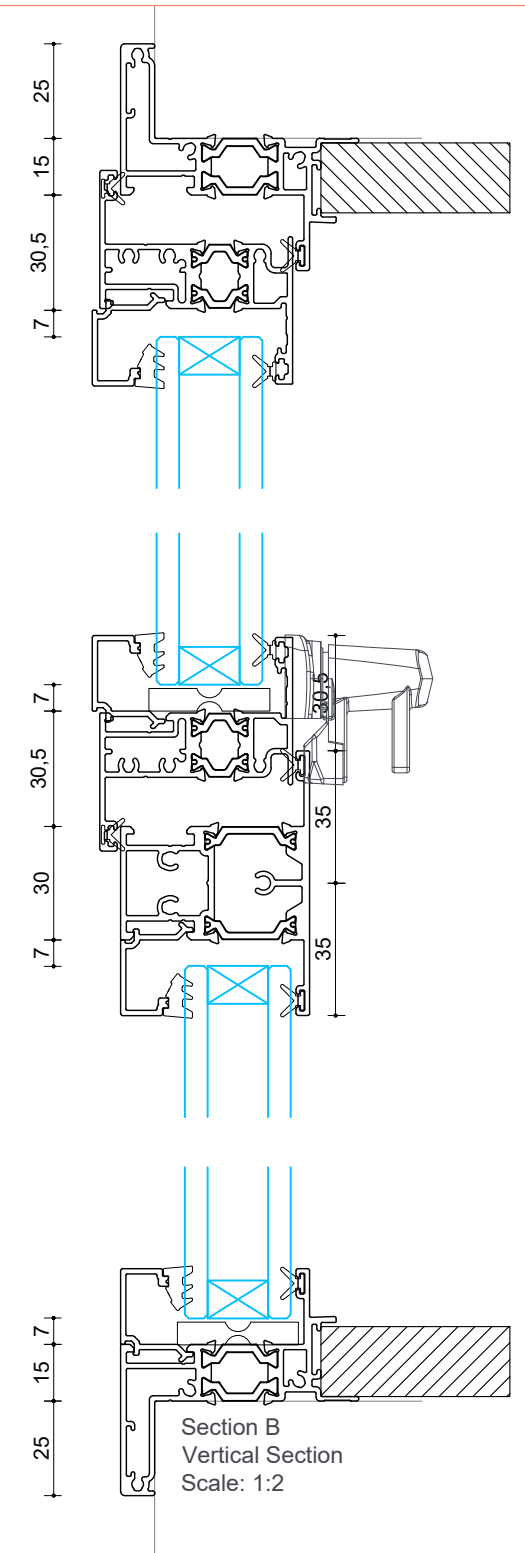


Section A
Vertical Section
Scale: 1:2



Section B
Horizontal Section
Scale: 1:2



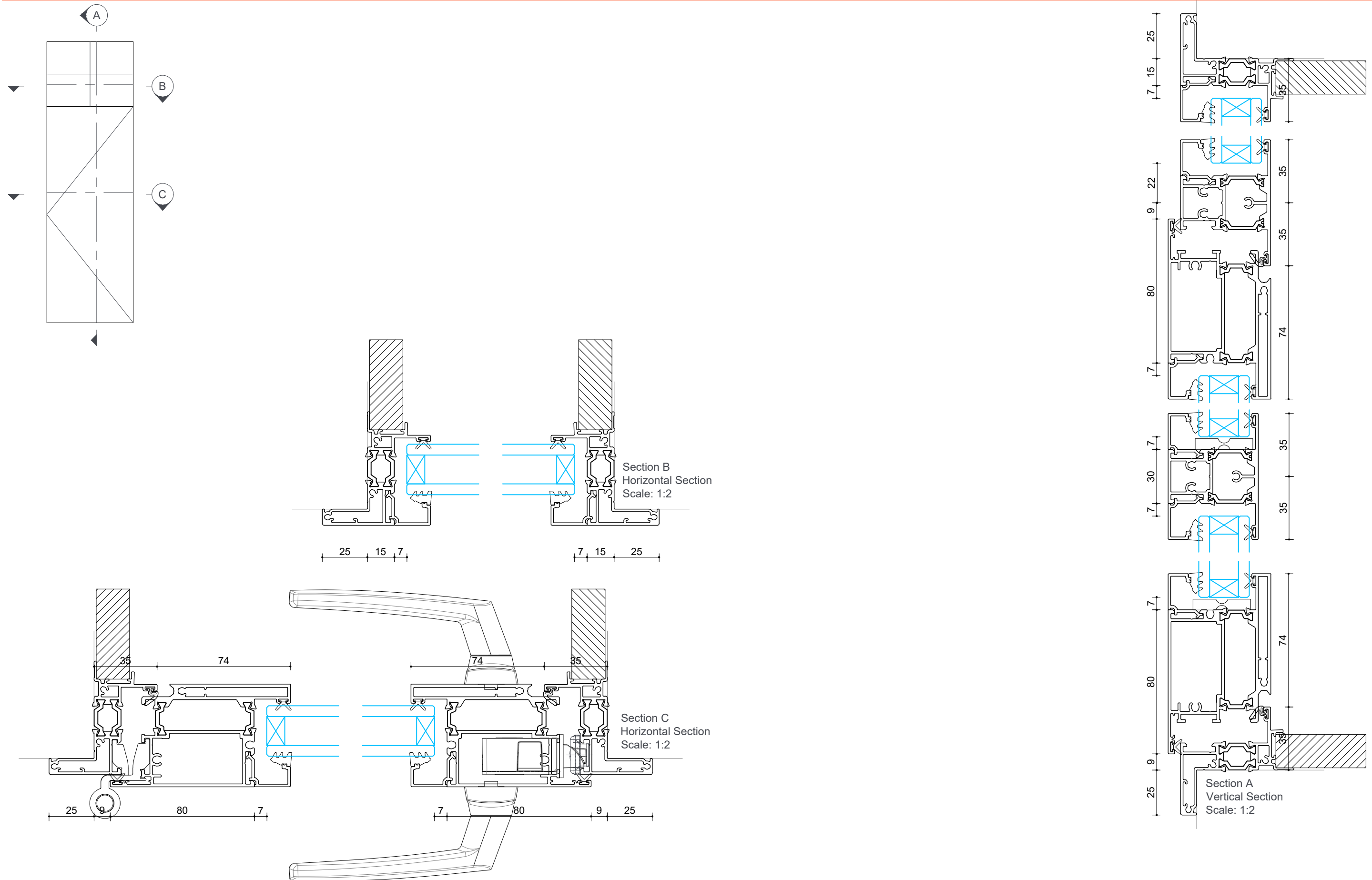
Cross Sections Thermal 50 Suite Hinge Door Open Out with Overlight

Date 04/08/2022
Scale 1:2

Drawn MS
Checked RT

004

©UNO Windows & Doors Ltd, all rights reserved, must not be copied, nor the contents passed onto any third party without the consent of the company. Technical details are subject to change without notice.



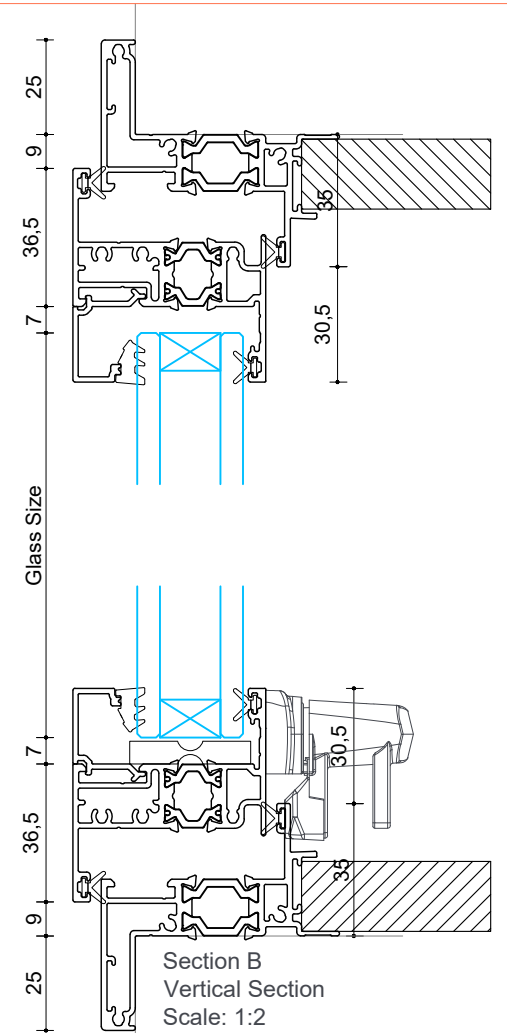
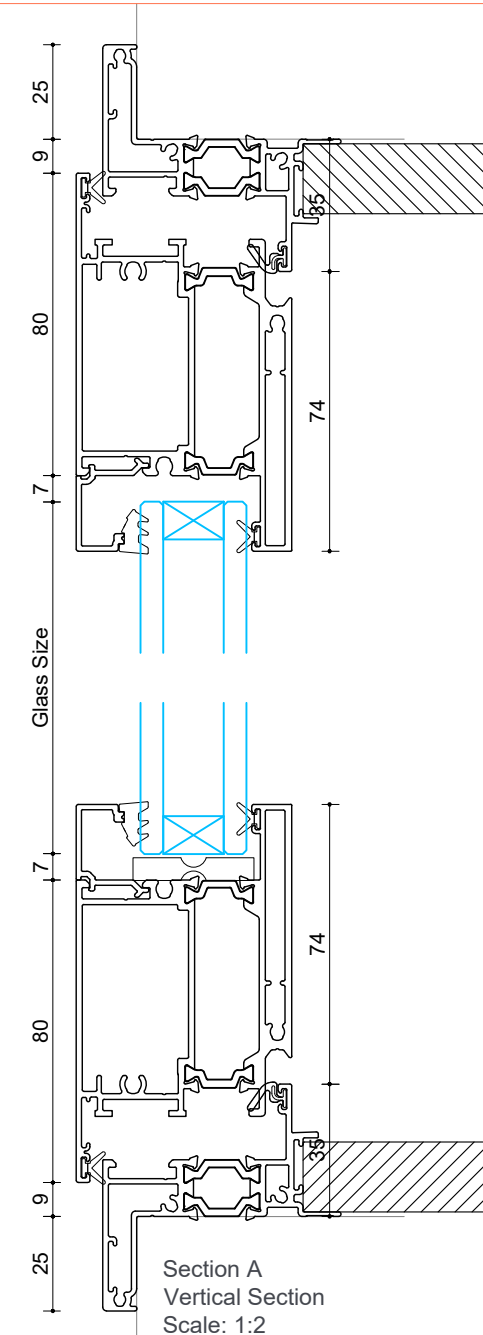
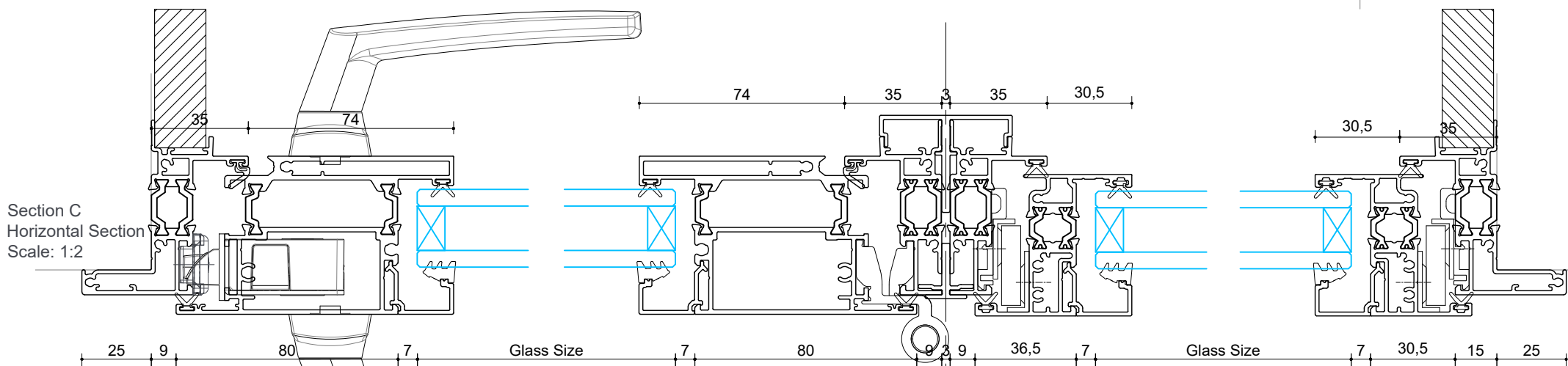
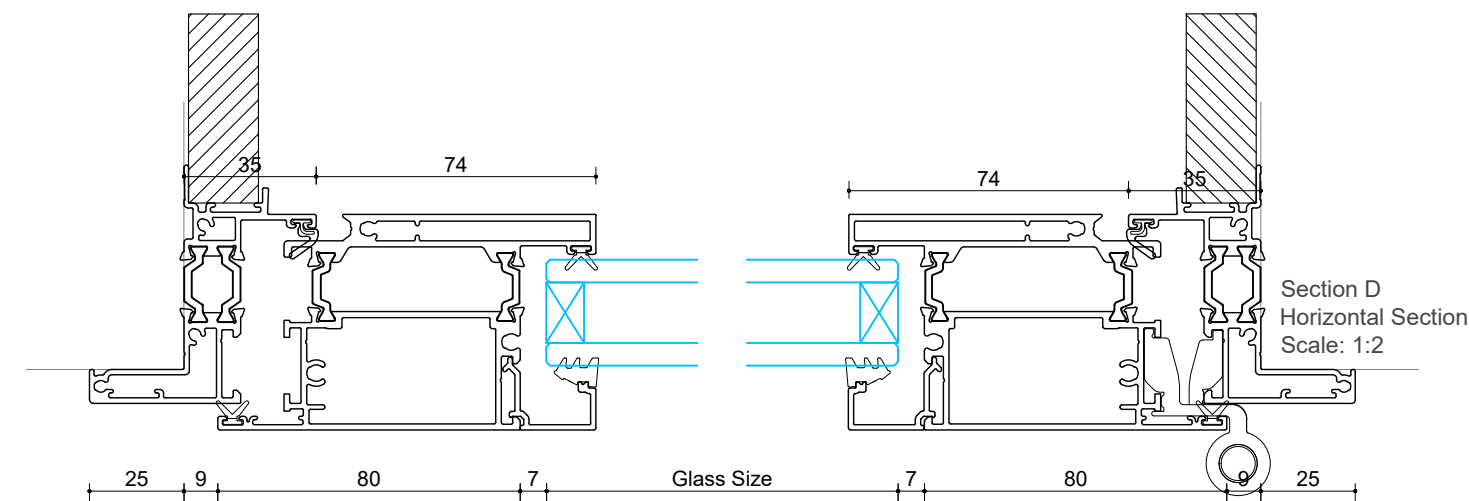
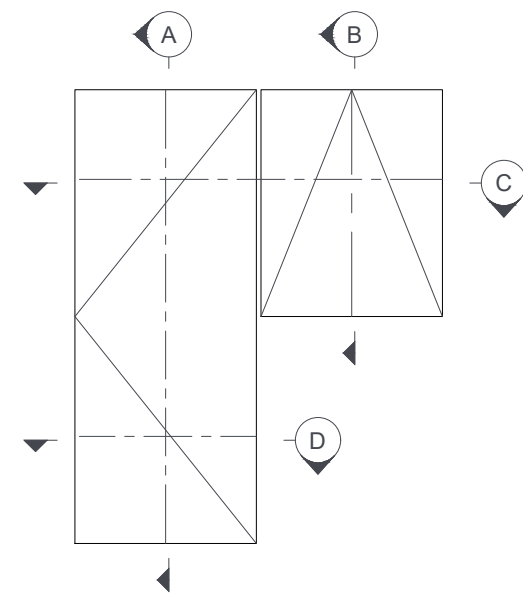
Cross Sections Thermal 50 Suite Hinge Door OO with Small Sidelight

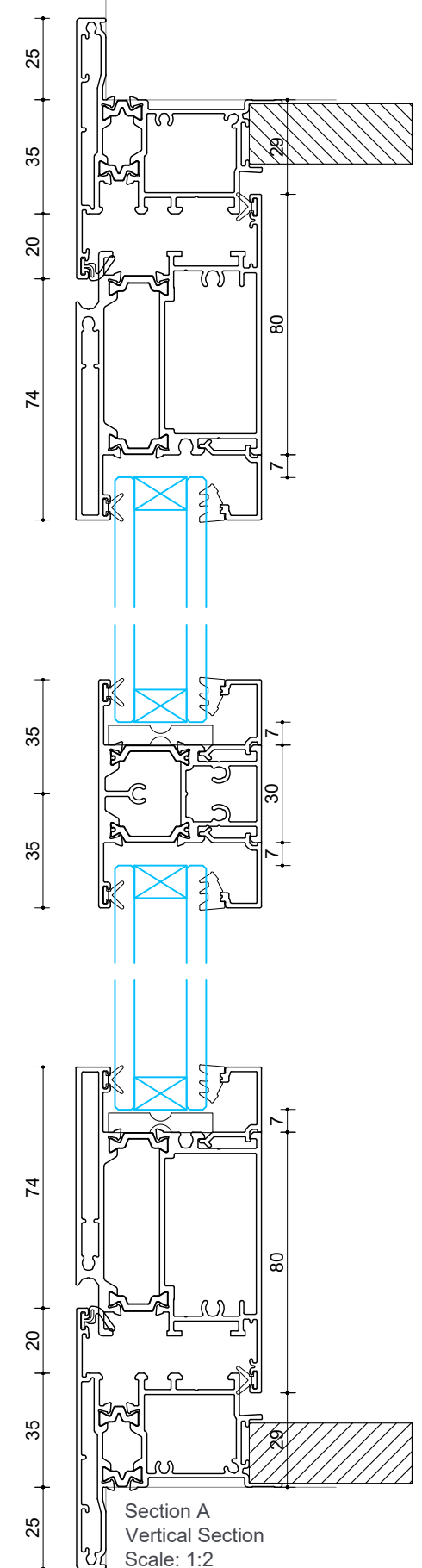
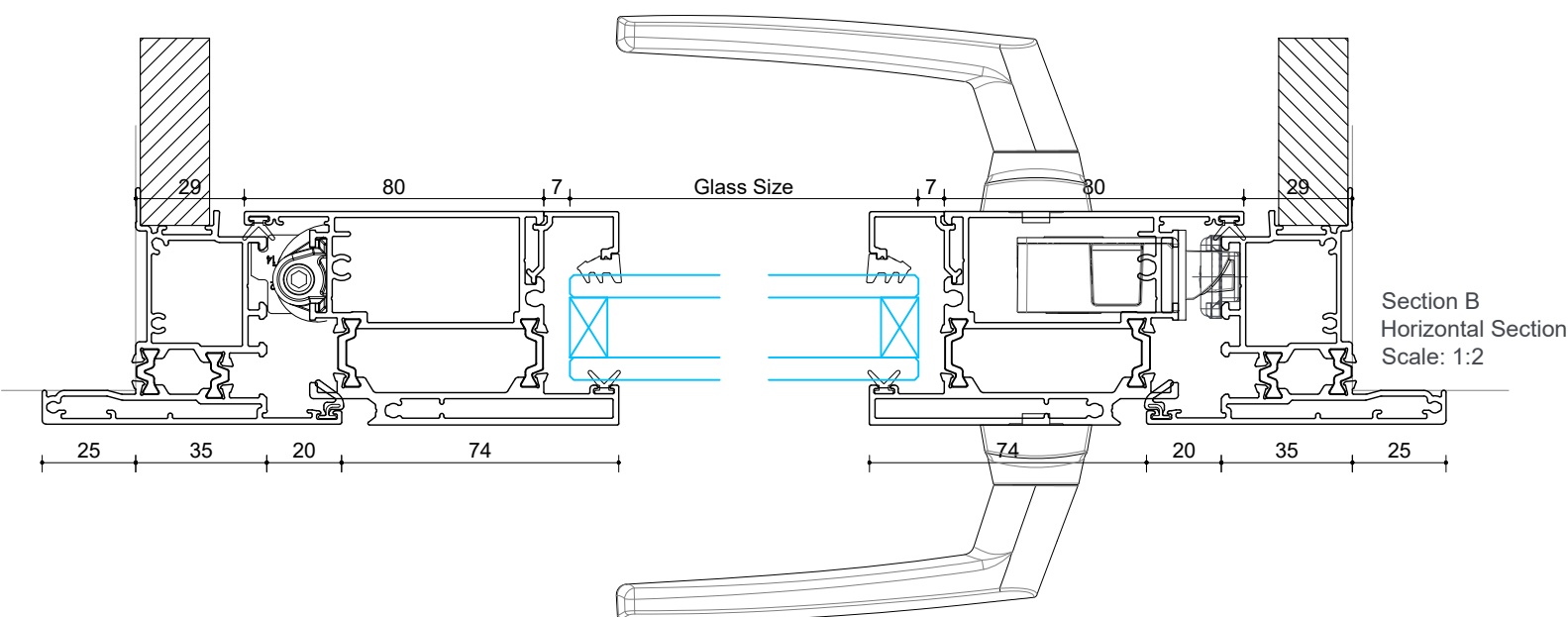
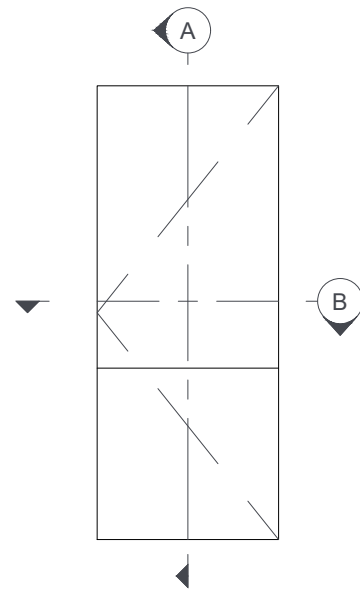
Date 04/08/2022
Scale 1:2

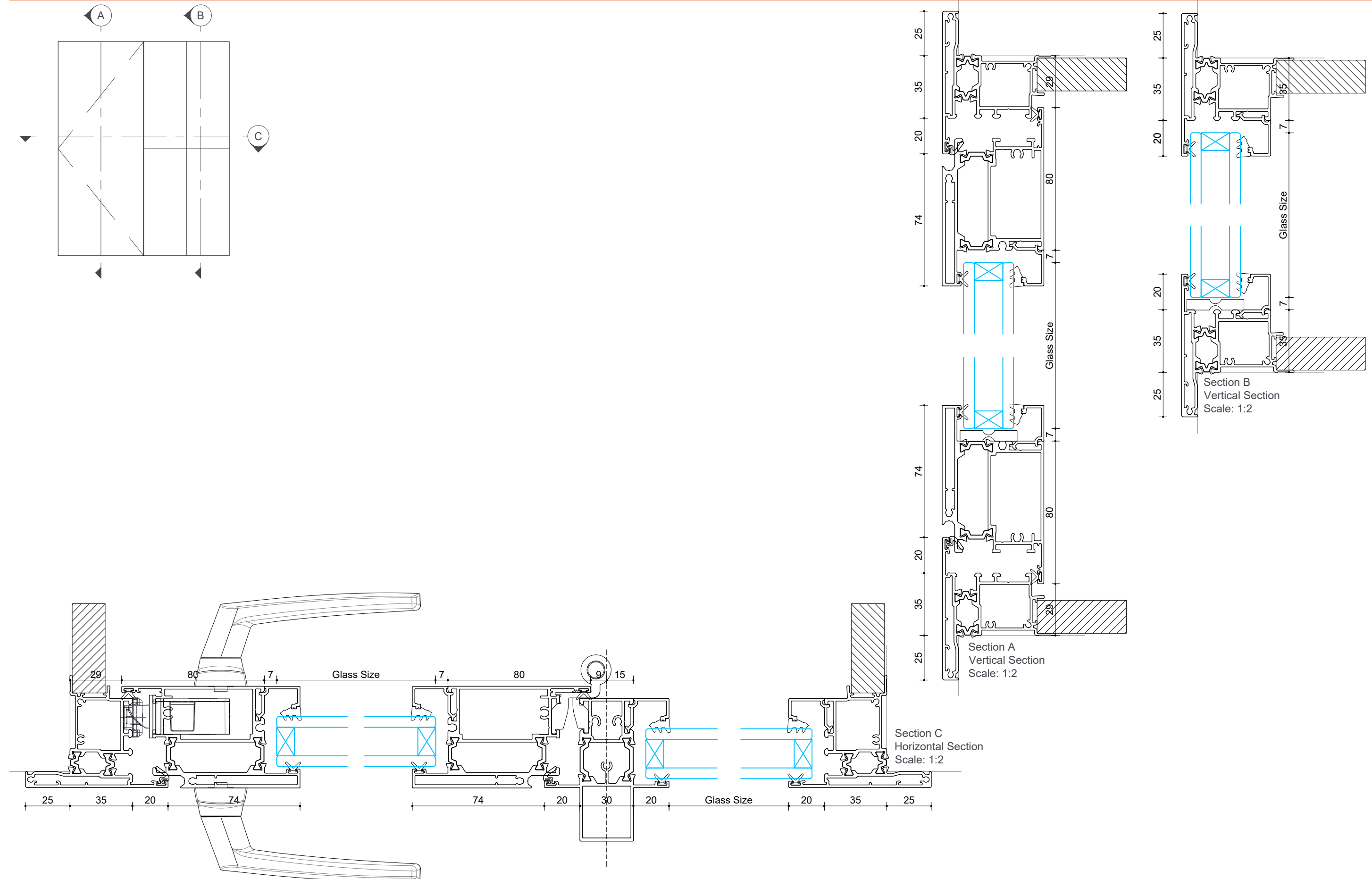
Drawn MS
Checked RT

005

©UNO Windows & Doors Ltd, all rights reserved, must not be copied, nor the contents passed onto any third party without the consent of the company. Technical details are subject to change without notice.





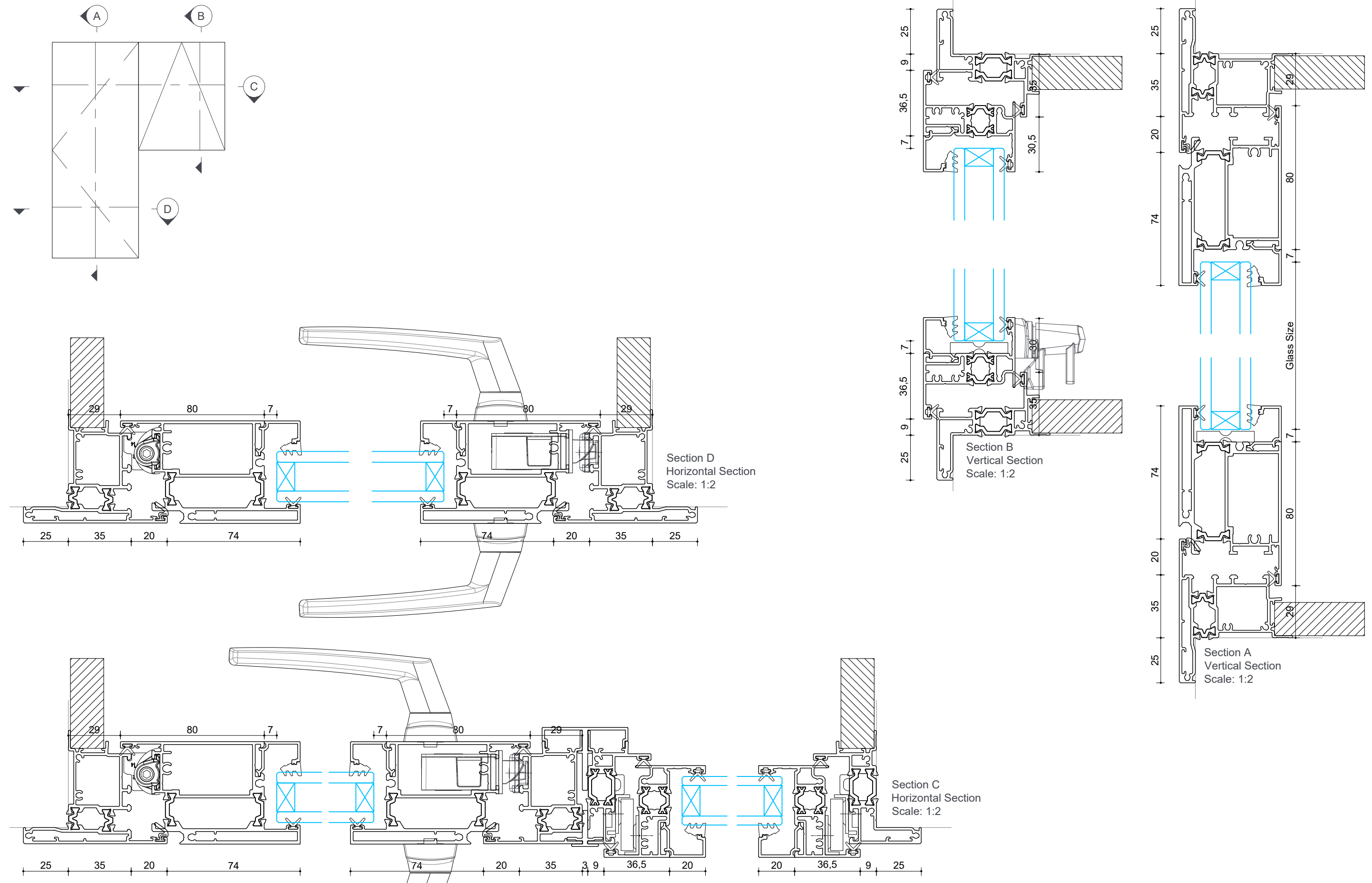


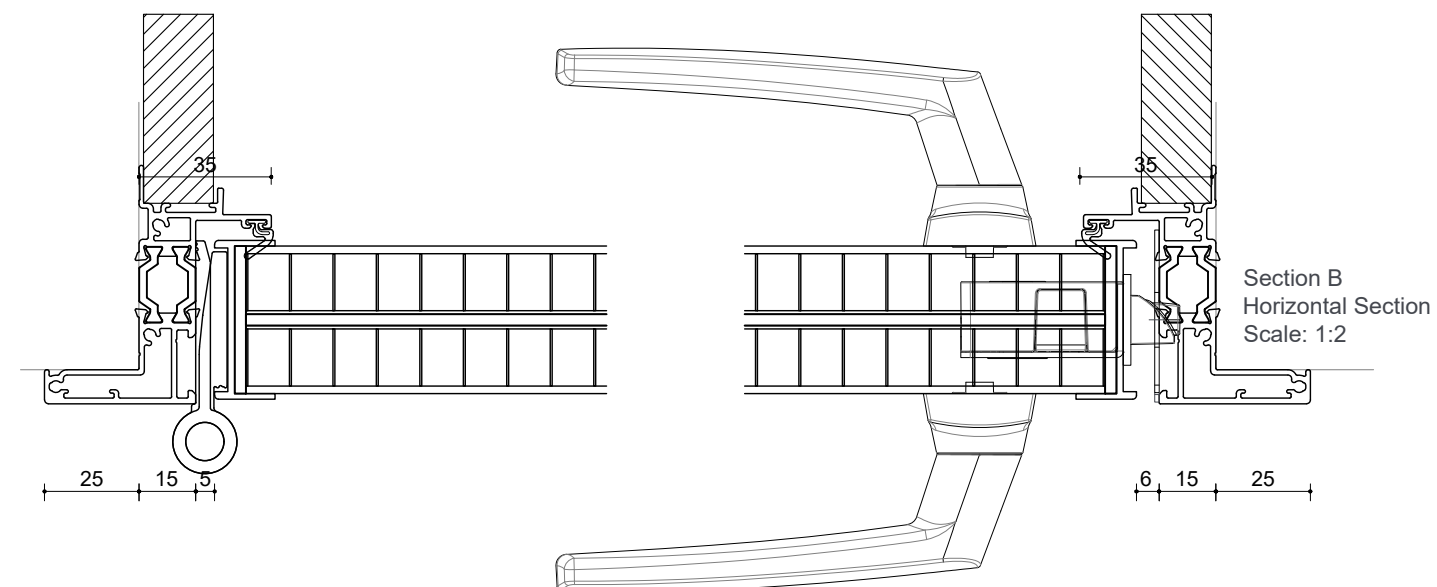
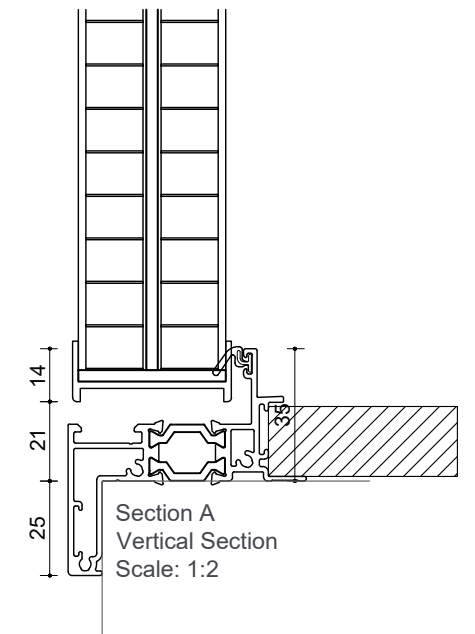
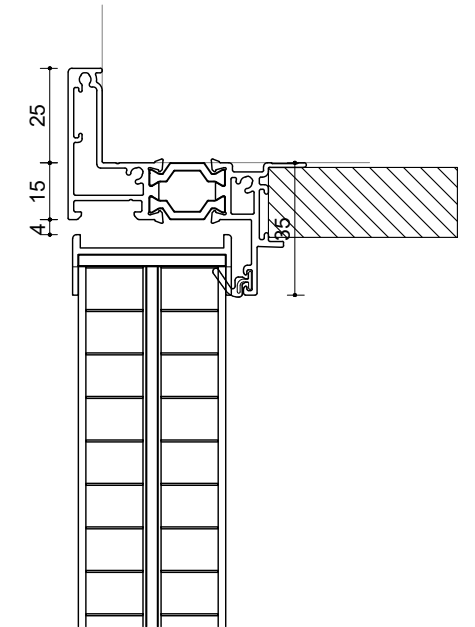
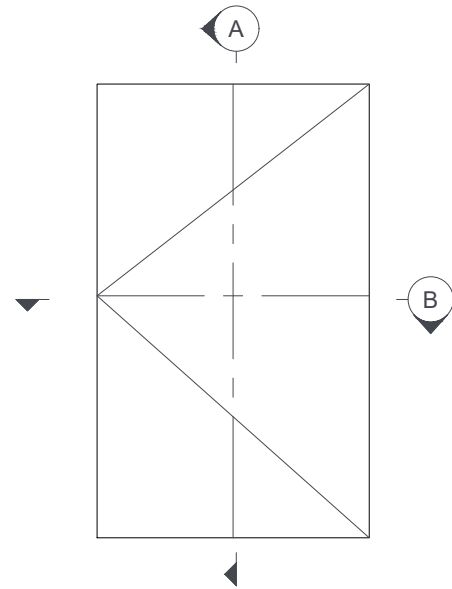
Cross Sections Thermal 50 Suite Hinge Door Open In with Small Sidelight

Date 04/08/2022
Scale 1:2

Drawn MS
Checked RT

©UNO Windows & Doors Ltd, all rights reserved, must not be copied, nor the contents passed onto any third party without the consent of the company. Technical details are subject to change without notice.





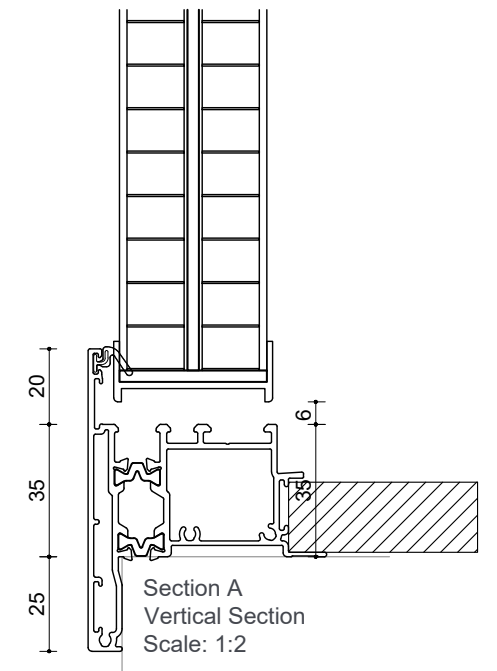
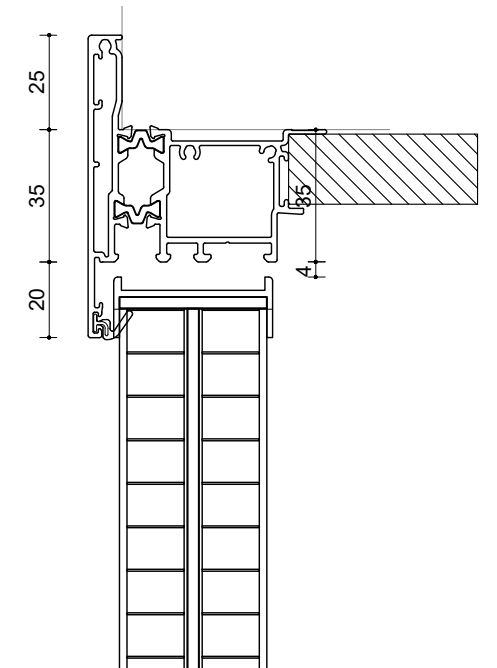
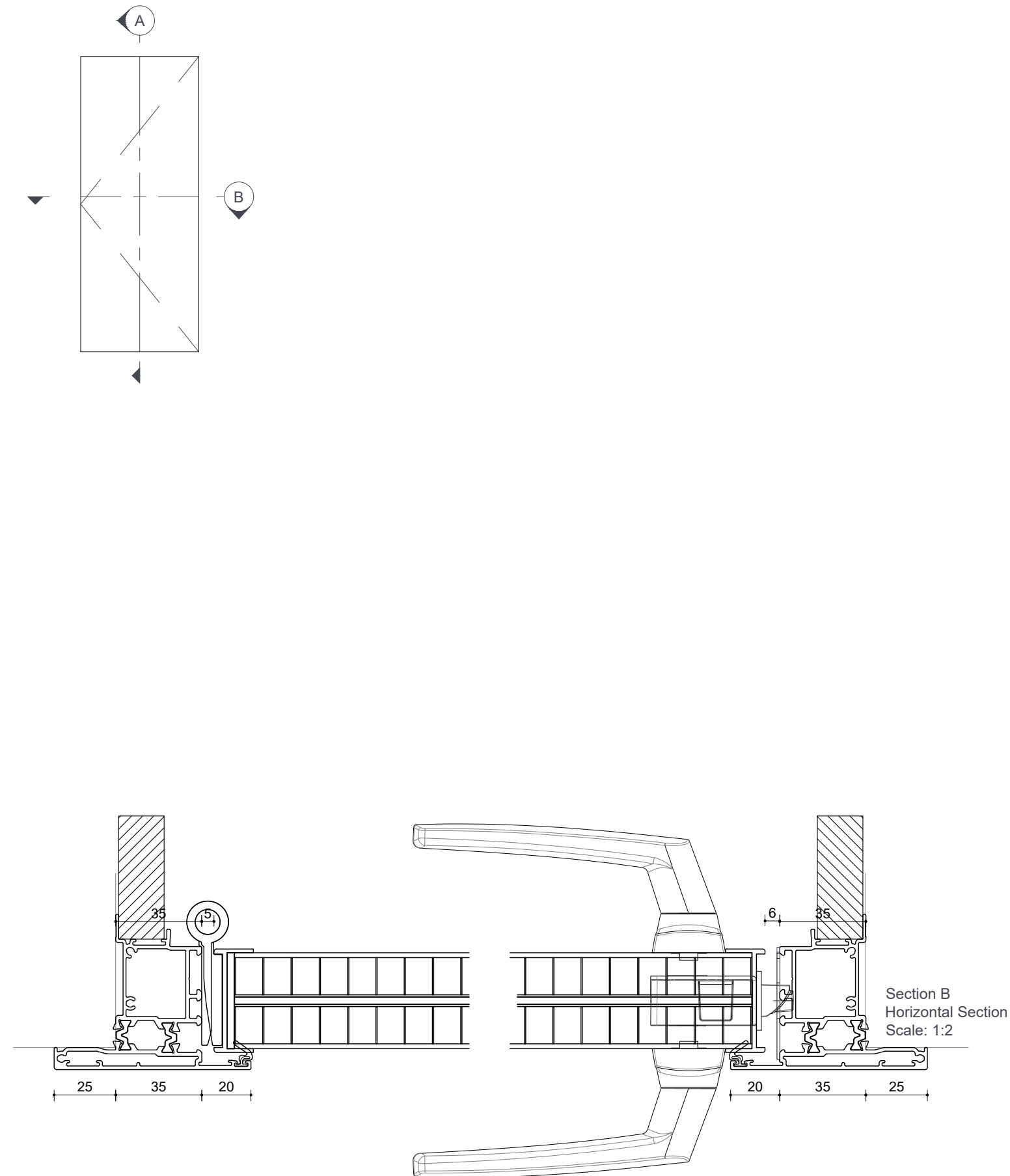
Cross Sections Thermal 50 Suite Entry Hinge Door Open In

Date 04/08/2022
Scale 1:2

Drawn MS
Checked RT



©UNO Windows & Doors Ltd, all rights reserved, must not be copied, nor the contents passed onto any third party without the consent of the company. Technical details are subject to change without notice.



Cross Sections Thermal 50 Suite Entry Hinge Door OO with Sidelight

Date 04/08/2022
Scale 1:2

Drawn MS
Checked RT

012

©UNO Windows & Doors Ltd, all rights reserved, must not be copied, nor the contents passed onto any third party without the consent of the company. Technical details are subject to change without notice.

